



KEYSTONE



KEYSTONE MFG. CO., BOSTON, MASS.

"JUNIOR MOVIEGRAPHS" 8 M.M.

REG. U. S. PAT. OFFICE

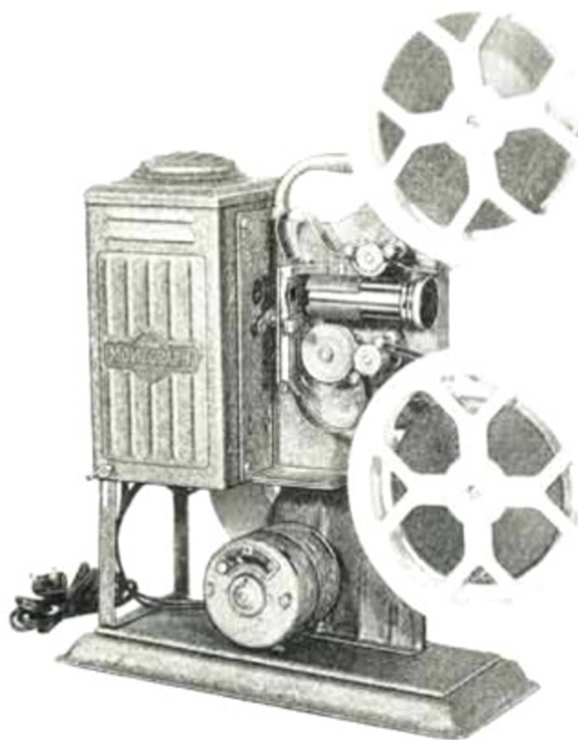
KEYSTONE IS THE FIRST TO MARKET 8 M.M. JUVENILE PROJECTORS

8 M.M.

A substantial saving in the cost of film — 50 feet of 8 M.M. film will give a show equivalent to 100 feet of 16 M.M. film — an additional saving of about half the cost of 16 M.M. in the price of the film itself. While the picture area of the 8 M.M. film is not quite as bright as the 16 M.M. — the difference in the cost of film makes the use of 8 M.M. equipment worthwhile to many users.

8 M.M.

SEND FOR COMPLETE 8 M.M. FILM CATALOGUE



**CAST FRAME! — FULL BEARINGS!
STEADY PICTURES!**

**MODEL D-854 — 8 M.M. — MORE Brilliancy! —
Tubular Projection Bulb — Forced Ventilation
Thru Lamphouse — Built in Speed Control —
No Lost Belts.**

Universal motor; built in speed control; ventilating system;
two 200-foot metal reels; reflector; carrying handle; con-
denser lens; spring belt retainers to prevent loss of belts;
tubular projection lamp, 140-watt; weight 9 lbs., 3 ozs.;
packed individually.

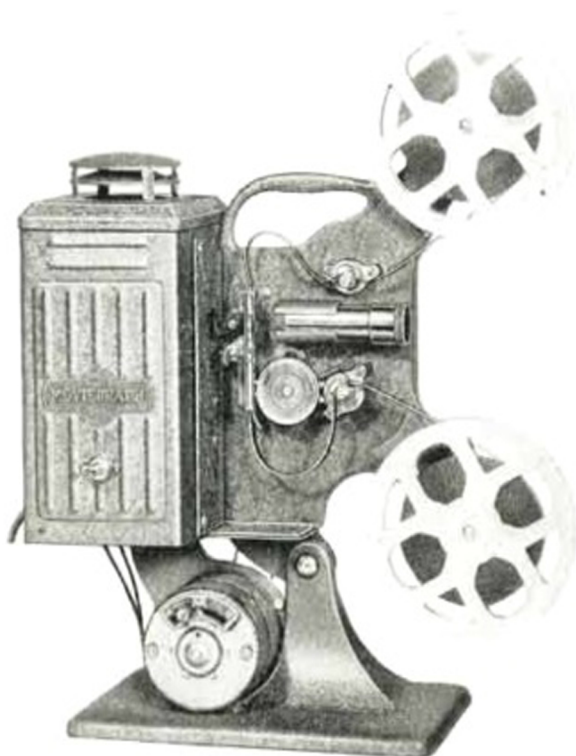


200-WATT! CAST FRAME AND BASE!

*Lighting and Ventilation System Same as in Adult
Models. Equipped with 200-Foot Spools.*

**MODEL D-857—8 M.M.—200-Watt Tubular Bulb
— Cast Iron Base — Built in Ventilation System
— 200-Foot Reels.**

Universal motor; speed control; cast iron base; shutter;
separate switch for lamp; 200-watt tubular projection lamp;
ventilating system; condenser lens; spring belt retainers to
prevent loss of belts; 1" diameter projection lens; two 200-
foot metal reels; weight 11 lbs.; packed individually.



KEYSTONE MFG. CO., BOSTON, MASS.
NEW YORK SHOW ROOM, 200 FIFTH AVENUE

"JUNIOR MOVIEGRAPHS" 16 M.M.

REG. U. S. PAT. OFFICE

Keystone took the lead in presenting a larger and finer selection of Juvenile Projectors, utilizing its vast experience as the world's oldest manufacturers of junior projection equipment.

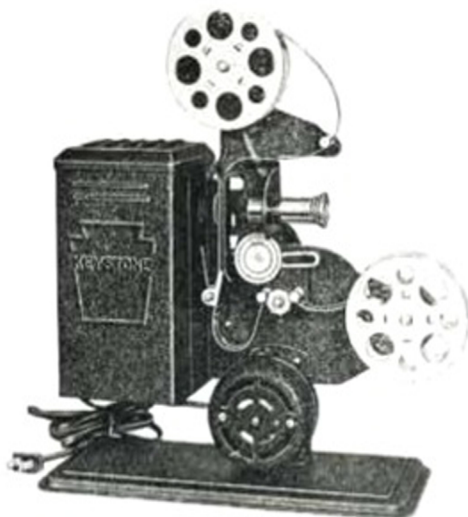
- 400-FOOT FILM CAPACITY
- COVERED GEARS
- BUILT IN SPEED CONTROL MOTOR
- ANGLE PROJECTION
- FULLY EQUIPPED WITH TWO SPOOLS
- FLARED LENS
- FRAMER
- BELT RETAINERS—NO LOSS OF BELTS
- CORD AND PLUG ATTACHED
- GEARED REWIND TO TOP SPOOL

For accuracy of performance and ease of operation "Junior Moviegraphs" are unequalled. Dealers will benefit by the steadily increasing general interest for projection and photography by young and old.



MODEL E-725 — Hand Crank —
100-foot Capacity — 16 M.M.

Hand crank; 75-watt lamp; two 100-foot reels; weight 5 lbs.; packed individually one dozen in corrugated carton.



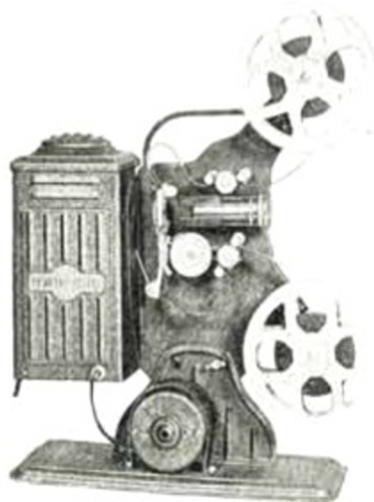
MODEL E-829 — A. C. Motor with Switch —
200-foot Capacity — 16 M.M.

With A. C. motor, including switch; two 100-foot reels; 125-watt lamp; tilting device; weight 7 lbs.; packed individually one half dozen per carton.



MODEL E-743 — A. C. Motor — 15-minute Show
—No Lost Belts—Switch in Motor—16 M.M.

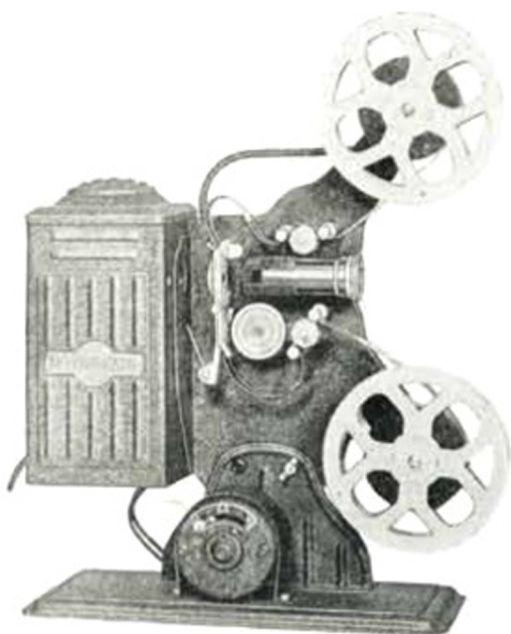
Two 200-foot reels; capacity 400 feet; bell shaped lens; concentrated filament bulb, 135-watt; condenser lens; swivel for angle projection; motor rewind; weight 9 lbs.; packed individually.



KEYSTONE MFG. CO., BOSTON, MASS.
NEW YORK SHOW ROOM, 200 FIFTH AVENUE

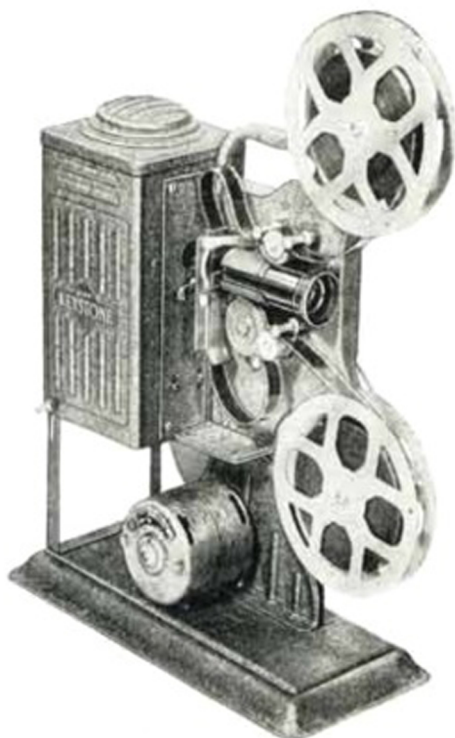
"JUNIOR MOVIEGRAPHS" 16 M.M.

REG. U. S. PAT. OFFICE



MODEL E-746—Universal Motor—Built in Speed Control—No Lost Belts—16 M.M.

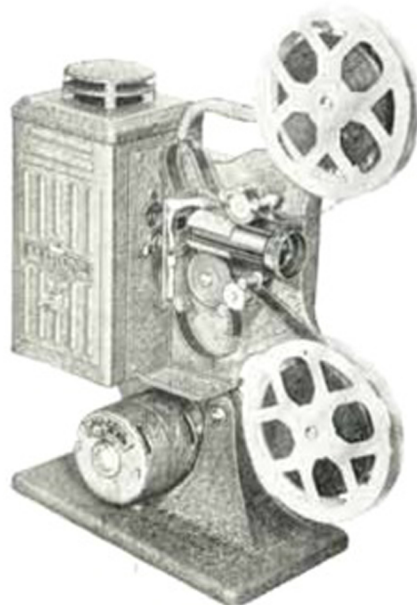
Universal motor; built in speed control; two 200-foot metal reels; capacity 400 feet; reflector; bell shaped flare lens; concentrated filament, 135-watt bulb; condenser lens; swivel for angle projection; spring belt holders; motor rewind; weight 8 lbs., 7 ozs.; packed individually.



**CAST FRAME! — FULL BEARINGS!
STEADY PICTURES!**

MODEL D-754 — MORE Brilliancy! — Tubular Projection Bulb — Forced Ventilation Thru Lamphouse — Built in Speed Control — No Lost Belts — 16 M.M.

Universal motor; built in speed control; ventilating system; two 400-foot metal reels; reflector; carrying handle; condenser lens; spring belt retainers to prevent loss of belts; tubular projection lamp, 140-watt; weight 9 lbs., 3 ozs.; packed individually.



MODEL D-757

200-WATT!

DIE CAST FRAME! CAST BASE!

**LIGHTING AND VENTILATION SYSTEM
SAME AS IN ADULT MODELS.
EQUIPPED WITH 400-FOOT SPOOLS.**

**MODEL D-757 — 16 M.M. — 200-Watt Tubular Bulb
— Cast Iron Base — Built in Ventilation System —
400-Foot Reels.**

Universal motor; speed control; cast iron base; shutter; separate switch for lamp; 200-watt tubular projection lamp; ventilating system; condenser lens; spring belt retainers to prevent loss of belts; 1" diameter projection lens; two 400-foot metal reels; weight 11 lbs.; packed individually.

**KEYSTONE MFG. CO., BOSTON, MASS.
NEW YORK SHOW ROOM, 200 FIFTH AVENUE**

KEYSTONE 16 AND 8 MILLIMETER MOVIE FILMS

PARTIAL LIST

SEND FOR COMPLETE CATALOGUE OF FILMS

16 MILLIMETER

- Mickey Mouse—100-Ft.—16 M.M.**
 901-A—Mickey's Barn Dance
 902-A—Mickey's Finish
 903-A—Mickey's Olympic Games
 904-A—Mickey's Bicycle Race
 905-A—Mickey's Barnyard Melodies
 906-A—Mickey's Mad Dog
 907-A—Mickey Goes Hunting
 908-A—Mickey the Duck Hunter
- Mickey Mouse—50-Ft.—16 M.M.**
 926-Z—Mickey's Musicians
 927-Z—Mickey's Marathon
 928-Z—Mickey's Jungle Pals
 929-Z—Mickey's Best Girl
 930-Z—Mickey's Turkey
 931-Z—Mickey's Playmates
 932-Z—Mickey the Castaway
 933-Z—Mickey and the Gorilla
- Mickey Mouse—25-Ft.—16 M.M.**
 951-Y—Mickey's Daffy Tunes
 952-Y—Mickey's Narrow Escape
 953-Y—Mickey's Wild Ducks
 954-Y—Mickey's Birthday Cake
 955-Y—Mickey's Boat Ride
 956-Y—Mickey the Juggler
 957-Y—Mickey's Banana Lunch
 958-Y—Mickey to the Rescue
- Mickey Mouse—10-Ft.—16 M.M.**
 976-X—Mickey's Comeback
 977-X—Mickey's Rehearsal
 978-X—Mickey the Band Leader
 979-X—Mickey's Playful Musicians
 980-X—Mickey Makes a Date
 981-X—Mickey's Mishaps
 982-X—Mickey's Surprise
 983-X—Mickey's Party
- Donald Duck—100-Ft.—16 M.M.**
 914-A—Donald Duck—The Ham Actor
 915-A—Donald Duck—Getting the Hook
- Donald Duck—50-Ft.—16 M.M.**
 938-Z—Donald Duck—Stage Struck
 939-Z—Donald Duck—Busting Bubbles
 940-Z—Donald Duck—Donald's Exit
- Oswald Rabbit—100-Ft.—16 M.M.**
 1-A—Dog Team Race
 4-A—Alaska Mush
 5-A—Play Ball
 6-A—The Duck's Birthday
- Oswald Rabbit—50-Ft.—16 M.M.**
 27-Z—Kitchen Antics
 28-Z—Home Run Oswald
 29-Z—The Speed Cop
 31-Z—House of Magic
- Oswald Rabbit—25-Ft.—16 M.M.**
 51-Y—Oswald—In Alaska
 52-Y—Oswald—The Barber
 53-Y—Oswald—Snowed Under
 54-Y—Oswald in Fairyland
- Shirley Temple—100-Ft.—16 M.M.**
 1130—Shirley Temple—At Home
- Shirley Temple—50-Ft.—16 M.M.**
 1120—Shirley Temple—At Home
 1121—Shirley Temple—Bedtime
- Shirley Temple—25-Ft.—16 M.M.**
 1101—Shirley Temple—At Home (Episode 1)
 1102—Shirley Temple—At Home (Episode 2)
 1103—Shirley Temple—Bedtime
 1104—Shirley Temple—Herself
- Charlie Chaplin—200-Ft.—16 M.M.**
 2014—Charlie Chaplin—In Tough Luck
 2015—Charlie Chaplin—In the Dumbbell
- Charlie Chaplin—100-Ft.—16 M.M.**
 1751—Charlie Chaplin—The Stolen Umbrella
 52101—Charlie Chaplin—The Dentist
 52102—Charlie Chaplin—Filling a Prescription
 52103—Charlie Chaplin—Laughing Gas
 52111—Charlie Chaplin—I am a King
 5212—Charlie Chaplin—The Window Washer
- Charlie Chaplin—50-Ft.—16 M.M.**
 1701—Charlie Chaplin—Skip the Puddles
 1703—Charlie Chaplin—Ladies' Man
 4211—Charlie Chaplin—Capturing the Robber
 4212—Charlie Chaplin—The Mighty Hunter
 4213—Charlie Chaplin—The Cave Man
 4214—Charlie Chaplin—Assistance Wanted
- Charlie Chaplin—25-Ft.—16 M.M.**
 16389—Charlie Chaplin—Free Samples at the Drug Store
 16392—Charlie Chaplin—Making Friends
 3211—Charlie Chaplin—Hoola Hoola Dance
 3212—Charlie Chaplin—The Janitor
 3213—Charlie Chaplin—Back Stage
 3214—Charlie Chaplin—The Scrapper
- Charlie Chaplin—10-Ft.—16 M.M.**
 16366—Charlie Chaplin—The Rescue
 16368—Charlie Chaplin—Charlie's Dream
 16369—Charlie Chaplin—Saving Charlie
 16372—Charlie Chaplin—Having Fun
- Western—100-Ft.—16 M.M.**
 5317—Ken Maynard—Saving the Squatter
 53106—William S. Hart—The Daring Rescue
 5311—Tom Mix—Using His Brains
 5313—Tom Mix—Who's the Boss
- Western—50-Ft.—16 M.M.**
 4311—Tom Mix—The Haaty Exit
 43101—Wm. S. Hart—The New Boss
 4312—Tom Mix—Ransomed
 4313—Tom Mix—Shootin' Up the Town
- Western—25-Ft.—16 M.M.**
 16394—Wm. S. Hart—Rescuing the Girl
 16406—Tom Mix—A Thrilling Movement
 1629—Tom Mix—Fire Cracker Kid
 1649—Tom Mix—The Escape
- Western—10-Ft.—16 M.M.**
 16373—Wm. S. Hart—Himself
 16376—Wm. S. Hart—The Outlaw Chief
 16416—Wm. S. Hart—Two Gun Bill
 16417—Wm. S. Hart—A Capture and Escape
- Travelogues—100-Ft.—16 M.M.**
 1801—Niagara Falls
 1802—Cairo, Egypt
 1803—Picturesque Japan
 1804—Spain
 1805—Turkey (Asia) and Constantinople
 1806—Through Dauphine (France)
 1807—Syria
 1808—Ceylon—Devil Dancers and Buddhas
 1809—Milan (Italy)
 1810—Ruins of Egypt
 1811—Hong-Kong and Canton, China
 1812—City of Algier
 1813—Venice (Italy)
- Cartoon Comedy—200-Ft.—16 M.M.**
 2001—Bobby Bumps—On Fishing Trip
 2005—Police Dogs—Turns Nurse
 2007—Judge Rummy—A Fitting Gift
 2008—Out of the Inkwell—Men of China
 2010—Farmer Alfalfa—In New York
- Cartoon Comedy—100-Ft.—16 M.M.**
 1760—Out of the Inkwell—Tantalizing Fly
 1766—Goodrich Dirt—Coin Collector
 1770—Hot Dog Series—Pete's Party
 1773—Us Fellers—Dud, Circus Performer
 1777—Farmer Alfalfa—Revenge
 1778—Judge Rummy—Joy Rider
 1783—Jerry on the Job—Tale of a Wag
 1790—Bobby Bumps—On the Doughnut Trail
 1791—Krazy Kat—Family Affair
 5112—Mutt and Jeff—The Bull Fighter
- Cartoon Comedy—50-Ft.—16 M.M.**
 1716—Jerry on the Job—The Candy Kid
 4112—Krazy Kat—Best Mouse Loves
 1721—Krazy Kat—The Great Cheese Robbery
 1515—The Foxy Farmer
 4114—Mutt and Jeff—The Champion
 1727—Farmer Alfalfa—Sees New York
 1728—Us Fellers—Old Swimming Hole
 1729—Out of the Inkwell—Chinaman
- Cartoon Comedy—25-Ft.—16 M.M.**
 3112—Krazy Kat—Kats is Kats
 1550—Billy the Goat—"Whoopie"
 3113—Bobby Bumps—On the Road
 3114—Jerry on the Job—Monkey Business
 3118—Judge Rummy—On with the Dance
 3119—Out of the Inkwell—Kangaroo
 3121—Us Fellers—Dud Makes a Home Run
 3122—Goodrich Dirt—The Cop
- Cartoon Comedy—10-Ft.—16 M.M.**
 2101—Krazy Kat—Beamed with a Brick
 2102—Bobby Bumps—Chased by the Sultan
 2103—Jerry on the Job—The Cat Drops Out

8 MILLIMETER

- Donald Duck—50-Ft.—8 M.M.**
 M914-A—Donald Duck—The Ham Actor
 M925-A—Donald Duck—Getting the Hook
- Donald Duck—25-Ft.—8 M.M.**
 M938-Z—Donald Duck—Stage Struck
 M939-Z—Donald Duck—Busting Bubbles
 M940-Z—Donald Duck—Donald's Exit
- Oswald Rabbit—50-Ft.—8 M.M.**
 M 1-A—Dog Team Race
 M 4-A—Alaska Mush
 M 5-A—Play Ball
- Oswald Rabbit—25-Ft.—8 M.M.**
 M27-Z—Kitchen Antics
 M28-Z—Home Run Oswald
 M29-Z—The Speed Cop
- Mickey Mouse—50-Ft.—8 M.M.**
 M901-A—Mickey's Barn Dance
 M902-A—Mickey's Finish
 M903-A—Mickey's Olympic Games
- Mickey Mouse—25-Ft.—8 M.M.**
 M926-Z—Mickey's Musicians
 M927-Z—Mickey's Marathon
 M928-Z—Mickey's Jungle Pals
- Cartoon Comedy—100-Ft.—8 M.M.**
 M 2001—Bobby Bumps—On Fishing Trip
 M 2005—Police Dogs—Turns Nurse
 M 2007—Judge Rummy—A Fitting Gift
- Charlie Chaplin—100-Ft.—8 M.M.**
 M 2014—Charlie Chaplin—In Tough Luck
 M 2015—Charlie Chaplin—In the Dumbbell
- Charlie Chaplin—50-Ft.—8 M.M.**
 M 1751—Charlie Chaplin—The Stolen Umbrella
 M 5211—Charlie Chaplin—I am a King
 M 5212—Charlie Chaplin—The Property Man
- Western—50-Ft.—8 M.M.**
 M53106—Wm. S. Hart—The Daring Rescue
 M 5311—Tom Mix—Using His Brains
 M 5317—Ken Maynard—Saving the Squatter
- Travelogues—50-Ft.—8 M.M.**
 M 1801—Niagara Falls
 M 1802—Cairo, Egypt
 M 1803—Picturesque Japan
 M 1804—Spain
- Cartoon Comedy—50-Ft.—8 M.M.**
 M 1760—Out of the Inkwell—Tantalizing Fly
 M 1766—Goodrich Dirt—Coin Collector
 M 1772—Hot Dog Series—Dog Gone It
 M 1782—Jerry on the Job—Without Coal
 M 1789—Bobby Bumps—Surf Rider
- Miscellaneous—50-Ft.—8 M.M.**
 M16175—Nature Study—The Birth of a Bean
 M16179—Nature Study—Marvels of a Trained Fly
 N16175—U. S. Navy—Air Fleet in Action
 M16176—U. S. Navy—Battleships Attack Enemy
- Shirley Temple—50-Ft.—8 M.M.**
 M 1130—Shirley Temple—At Home
- Charlie Chaplin—25-Ft.—8 M.M.**
 M 1701—Charlie Chaplin—Skip the Puddles
 M 1703—Charlie Chaplin—Ladies' Man
 M 4211—Charlie Chaplin—Capturing the Robber
 M 4212—Charlie Chaplin—The Mighty Hunter
 M 4218—Charlie Chaplin—Under Arrest
- Western—25-Ft.—8 M.M.**
 M43101—Wm. S. Hart—The New Boss
 M 4311—Tom Mix—The Haaty Exit
 M 4312—Tom Mix—Ransomed
- Cartoon Comedy—25-Ft.—8 M.M.**
 M 1716—Jerry on the Job—The Candy Kid
 M 4112—Krazy Kat—Best Mouse Loves
 M 4114—Mutt and Jeff—The Champion
 M 1729—Out of the Inkwell—Chinaman
- Gang Comedy—25-Ft.—8 M.M.**
 M 4611—McDougal Alley Gang—Yankee Doodle
- Shirley Temple—25-Ft.—8 M.M.**
 M 1120—Shirley Temple—At Home
 M 1121—Shirley Temple—Bedtime

Send for Separate List of "Popeye" and "Betty Boop" 8 and 16 m.m. Films

KEYSTONE MFG. CO., BOSTON, MASS.
 NEW YORK SHOW ROOM, 200 FIFTH AVENUE

JUNIOR MOVIEGRAPH ACCESSORIES

SCREENS — SPOOLS — SPLICERS

FILM CEMENT — BULBS — LENSES

KEYSTONE SCREENS



NO. 604

Made of Masonite surfaced with special Aluminum Preparation, complete in wood frame. Size: 22" x 16". Has swivel pieces at the base so that the screen will stand. Each packed in corrugated carton, weight when packed for shipment, 3½ lbs.

NO. 607 — KEYSTONE SCREEN

Same as No. 604 above, size 32" x 27". Packed in corrugated carton ready for shipment. Weight 8 lbs.



NO. P960 BULB

MOVIEGRAPH BULBS

Ordinary house bulbs will not give a good picture in any Projector. Only a clear lamp with concentrated filament and of the proper height that will reflect directly through the lens will give a clear picture under otherwise normal conditions.

When purchasing lamps the best lamp for all E Model Moviegraphs is our No. P960 30c each
For D-754 and D-854 No. T1060, 60c each
For D-757 and D-857 No. RT-8-200 watt Projection Bulb \$1.30 each

NO. 710 — FILM SPLICER



For mending film breaks, equipped with film cement and simple instructions. Packed small cardboard box.

NO. 734 — SPLICING OUTFIT



The No. 734 is designed to permit rapid, accurate joining of 16 m.m. or 8 m.m. film. Complete with film cement, water bottle and cutter.



400' Reel

EXTRA SPOOLS

| | |
|--------------------------------|-------------|
| 400-foot steel spool | \$.40 List |
| 400-foot spring steel spool .. | .60 List |
| 200-foot steel spool | .30 List |
| 100-foot steel spool | .20 List |
| 50-foot steel spool | .15 List |

KEYSTONE FILM CEMENT

Keystone Film Cement was especially developed for the splicing of safety film. It contains the highest quality chemicals and is furnished in ½-ounce or 1-ounce bottles.

| | |
|----------------------|-------------|
| ½-ounce Bottle | \$.25 List |
| 1-ounce Bottle | .40 List |



KEYSTONE LENSES

No. E-808 — Lens for Models E-725 — E-829.

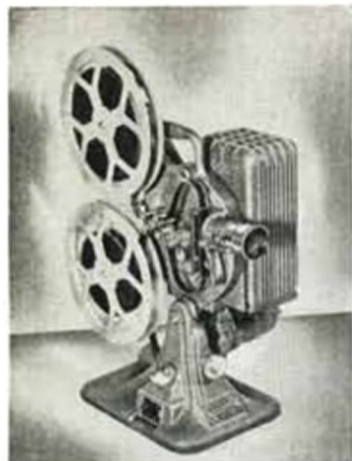
No. E-809 — Lens for Models E-743 — E-746.

No. D-807 — Lens for Models D754, D854, D757 and D857.



KEYSTONE MFG. CO., BOSTON, MASS.
NEW YORK SHOW ROOM, 200 FIFTH AVENUE

ADULT MOVIE PROJECTORS AND CAMERAS



Model A82 PROJECTOR—16 M.M.
750-Watt Lamp. Universal Motor. 400-Ft. capacity. F1.6 auditorium projection lens. Reverse pictures. Automatic rewind. Pilot light. Still pictures. \$84.50



PICTOGRAPH PROJECTOR

Front surface mirrors for accurate optical reflection. 2 tubular 140-watt projection bulbs. Has ventilation provision. Projects 48-inch pictures. Double element projection lens. Model No. 441 \$19.50



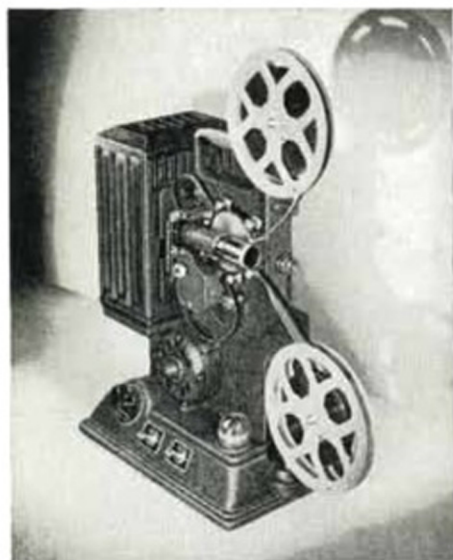
**16 Millimeter
Movie
Cameras**

Universal focus spring motor, three or seven speeds, daylight loading, beautifully finished, factory guarantee.

Tax Included

| | |
|---------------------------------|---------|
| B-1—One-Speed with F3.5 Lens | \$34.95 |
| A-3—Three Speeds with F3.5 Lens | 42.50 |
| A-7—Seven Speeds with F2.7 Lens | 52.50 |
| A-7—Seven Speeds with F1.5 Lens | 78.50 |

8 MILLIMETER PROJECTORS AND CAMERAS — For Black and White or Color



MODEL R-8 PROJECTOR — 8 M.M.
500-watt lamp, Universal motor, 400-foot capacity. Quiet operation, electric rewind, built in carrying handle, fully achromatic lens. Shows clear brilliant pictures.
Model R-8 — 500-watt \$62.50



MODEL CC-8 PROJECTOR — 8 M.M.

Adjustable tilt, Universal Motor, Speed Control. Forced draft ventilation. Solid die cast body. Double blade barrel shutter. Capacity 400-ft. Attractive metallic wrinkle finish. Electric rewind.

| | |
|---|---------|
| Model CC-8 — 300-watt with F 1.85 lens fully achromatic | \$36.50 |
| Model C-8 — 200-watt with F 2.8 lens | \$29.50 |

**8 M.M. POCKET
SIZE MODEL K-8
CAMERA \$31.75**

Tax Included



Bronzed grain finish. F 3.5 universal focus lens. Weight 1 lb. 12 oz. Interchangeable with F 1.9 on F 2.5 lenses as well as F 3.5 — 1 1/2" Telephoto lens. 3 speeds, normal, low and slow motion. Direct Vision View Finder. Visual Footage indicator. Silent winding.

KEYSTONE MFG. CO., BOSTON, MASS.
NEW YORK SHOW ROOM, 200 FIFTH AVENUE